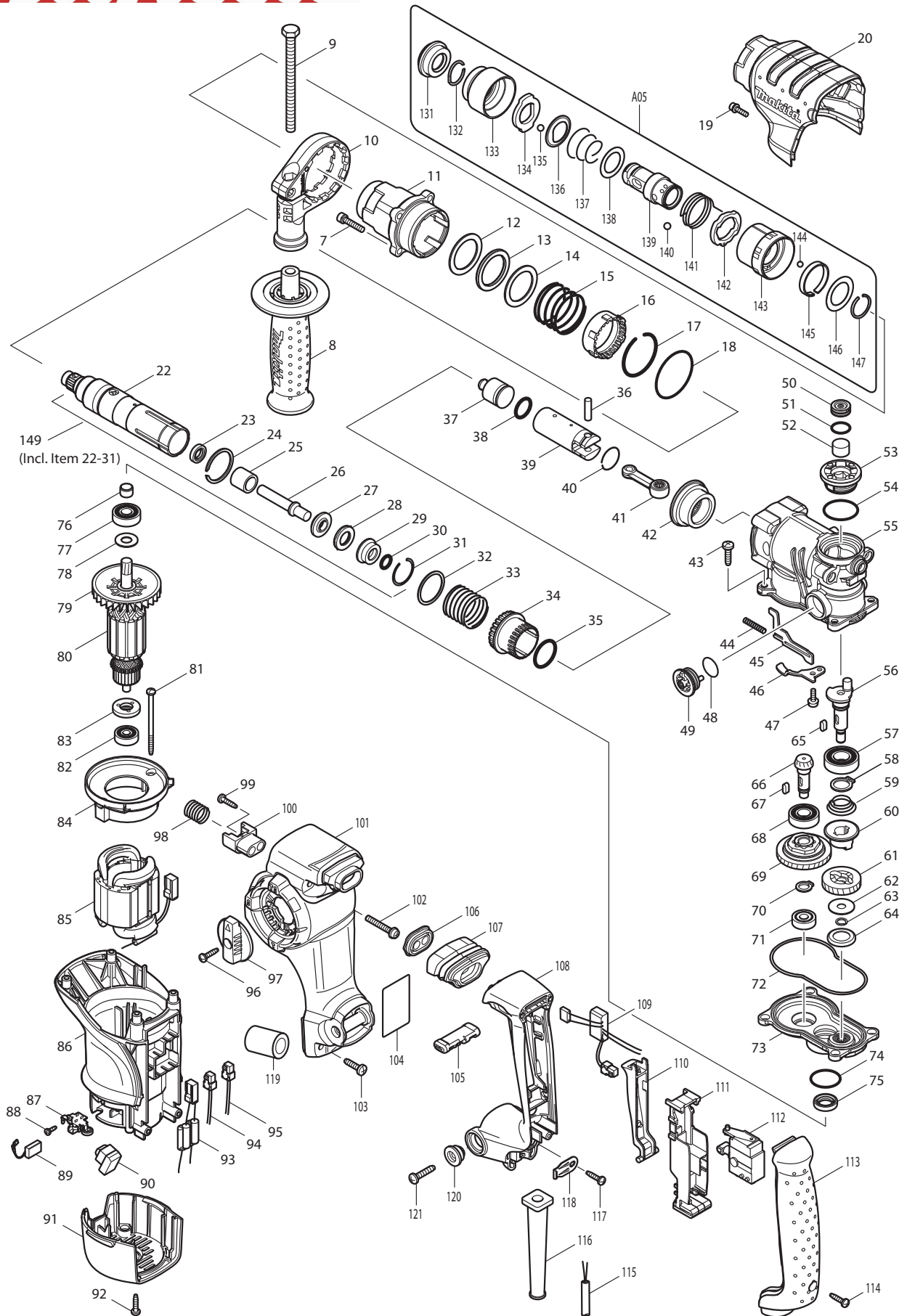




08 - 2010  
HR2811FT  
SDS-PLUS 1-1/8" ROTARY HAMMER



Item No	Type	Ref	Part No	Description	Qty	Unit
007			922241-7	HEX. SOCKET HEAD BOLT M5X25	4	PC.
008			158057-6	GRIP 36 COMPLETE	1	PC.
		INC.	931402-8	HEX. NUT M8	1	PC.
009			921919-9	HEX. BOLT M8X110	1	PC.
010			419975-6	GRIP BASE 20	1	PC.
011			158288-7	BARREL COMPLETE	1	PC.
		INC.	212403-8	NEEDLE BEARING 3012	1	PC.
		INC.	213345-9	OIL SEAL 25	1	PC.
012			267354-0	FLAT WASHER 31	1	PC.
013			262133-1	URETHANE RING 31	1	PC.
014			267354-0	FLAT WASHER 31	1	PC.
015			234020-4	COMPRESSION SPRING 37	1	PC.
016			419986-1	LOCK SLEEVE	1	PC.
017			233952-2	RING SPRING 41	1	PC.
018			213620-3	O RING 46	1	PC.
019			922128-3	HEX. SOCKET HEAD BOLT M4X16	1	PC.
020			419984-5	CRANK HOUSING COVER	1	PC.
022			158286-1	TOOL HOLDER GUIDE COM. - N/L/A as individually	1	PC.
023			213344-1	OIL SEAL 9	1	PC.
024			961140-8	RETAINING RING	1	PC.
025			331769-8	SLEEVE 9	1	PC.
026			324796-2	IMPACT BOLT	1	PC.
027			324402-9	RING 10	1	PC.
028			421955-0	CUSHION RING 13	1	PC.
029			324216-6	O RING CASE	1	PC.
030			213073-6	O RING 9	1	PC.
031			233917-4	RING SPRING 28	1	PC.
032			267105-1	FLAT WASHER 29	1	PC.
033			234021-2	COMPRESSION SPRING 30	1	PC.
034			331770-3	DRIVING SLEEVE	1	PC.
035			213435-8	O RING 26	1	PC.
036			256099-5	PIN 6	1	PC.
037			324733-6	STRIKER	1	PC.
038			213227-5	O RING 16	1	PC.
039			331776-1	PISTON CYLINDER	1	PC.
040			233954-8	RING SPRING 21	1	PC.
041			158282-9	CONNECTING ROD COMPLETE	1	PC.
		INC.	212043-2	NEEDLE BEARING 810	1	PC.
042			227532-4	SPIRAL BEVEL GEAR 31	1	PC.
043			266420-0	TAPPING SCREW 5X20	4	PC.
044			234019-9	COMPRESSION SPRING 4	1	PC.
045			345814-3	LINK PLATE	1	PC.
046			345815-1	GUIDE PLATE	1	PC.
047			911118-1	PAN HEAD SCREW M4X12	1	PC.
048			213262-3	O RING 18	1	PC.
049			162256-4	LINK LEVER COMPLETE	1	PC.
050			419988-7	FILTER CAP	1	PC.
051			213218-6	O RING 16	1	PC.
052			443129-3	FILTER	1	PC.
053			419987-9	CRANK CAP	1	PC.
054			213406-5	O RING 30	1	PC.
055			158289-5	CRANK HOUSING COMPLETE	1	PC.
056			324793-8	CRANK SHAFT	1	PC.
057			211232-6	BALL BEARING 6002LLU	1	PC.

Item No	Type	Ref	Part No	Description	Qty	Unit
058			961055-9	RETAINING RING S-15	1	PC.
059			233951-4	C. C. SPRING 16-26	1	PC.
060			223167-9	CLUTCH	1	PC.
061			226653-9	HELICAL GEAR 29	1	PC.
062			267353-2	FLAT WASHER 8	1	PC.
063			961034-7	RETAINING RING	1	PC.
064			345818-5	CUP WASHER 16	1	PC.
065			254239-9	KEY 4	2	PC.
066			227524-3	SPIRAL BEVEL GEAR 9	1	PC.
067			254239-9	KEY 4	1	PC.
068			210105-0	BALL BEARING 6001LLU	1	PC.
069			125386-2	TORQUE LIMITTER ASS'Y	1	PC.
070			961006-2	RETAINING RING S-10	1	PC.
071			210024-0	BALL BEARING 608LLU	1	PC.
072			424028-8	SEAL RING	1	PC.
073			158287-9	GEAR HOUSING COMPLETE	1	PC.
074			213445-5	O-RING 26	1	PC.
075	1		213133-4	* OIL SEAL 12	1	PC.
	2		213678-2	* OIL SEAL 12	1	PC.
076			331775-3	SLEEVE 10	1	PC.
077			210054-1	BALL BEARING 6000LLU	1	PC.
078			253171-4	FLAT WASHER 10	1	PC.
079			240095-3	FAN 64	1	PC.
080			515291-5	ARMATURE ASS'Y 115V	1	PC.
		INC.		Item No. 79,82,83	0	
081			266325-4	TAPPING SCREW 4X70	2	PC.
082			210023-2	BALL BEARING 627DDW	1	PC.
083			681656-4	INSULATION WASHER	1	PC.
084			419989-5	BUFFLE PLATE	1	PC.
085			526581-1	FIELD ASS'Y 115V	1	PC.
		INC.	654283-0	CONTACT	2	PC.
		INC.	686044-0	CONNECTOR HOUSING	1	PC.
086			419982-9	MOTOR HOUSING	1	PC.
087			643766-5	BRUSH HOLDER	2	PC.
088			266421-8	TAPPING SCREW 3X10	2	PC.
089			195001-2	CARBON BRUSH CB-325 2PC/SET (W/ ORIGIN)	1	SET
090			631754-4	LED CIRCUIT	1	PC.
091			419983-7	REAR COVER	1	PC.
092			266326-2	TAPPING SCREW 4X18	2	PC.
093			638565-8	LEAD UNIT	1	PC.
094			638567-4	LEAD UNIT	1	PC.
095			638566-6	LEAD UNIT	1	PC.
096			266326-2	TAPPING SCREW 4X18	1	PC.
097			158284-5	CHANGE LEVER COMPLETE	1	PC.
098			234022-0	COMPRESSION SPRING 14	1	PC.
099			266326-2	TAPPING SCREW 4X18	2	PC.
100			419995-0	SPRING GUIDE	1	PC.
101			419979-8	HANDLE BASE	1	PC.
102			911258-5	PAN HEAD SCREW M5X35	2	PC.
103			266420-0	TAPPING SCREW 5X20	2	PC.
104			863933-8	HR2811FT NAME PLATE	1	PC.
105			419992-6	F/R CHANGE LEVER	1	PC.
106			419994-2	DUST COVER SUPPORT	1	PC.
107			424029-6	DUST COVER	1	PC.

Item No	Type	Ref	Part No	Description	Qty	Unit
108			419978-0	HANDLE	1	PC.
109			631752-8	POWER SUPPLY CIRCUIT	1	PC.
110			419990-0	SWITCH LEVER	1	PC.
111			158281-1	SWITCH HOLDER COMPLETE	1	PC.
112			650591-7	SWITCH	1	PC.
113			419980-3	HANDLE COVER	1	PC.
114			266326-2	TAPPING SCREW 4X18	1	PC.
115			664895-1	CORD W/PLUG 2P-18-4.0M, SJ	1	PC.
116			682572-3	CORD GUARD 8	1	PC.
117			266326-2	TAPPING SCREW 4X18	1	PC.
118			687169-3	STRAIN RELIEF	1	PC.
119			685722-9	SPONGE	1	PC.
120	1		313139-3	SHOULDER SLEEVE 6	2	PC.
	2		459895-2	SHOULDER SLEEVE 6	2	PC.
121			266041-8	TAPPING SCREW 5X25	2	PC.
131			286263-4	CAP 35	1	PC.
132			233940-9	RING SPRING 19	1	PC.
133			418217-5	CHUCK COVER	1	PC.
134			345333-9	STOPPER	1	PC.
135			216022-2	STEEL BALL 7.0	1	PC.
136			345187-4	GUIDE WASHER	1	PC.
137			233916-6	CONICAL COMP. SPRING 21-29	1	PC.
138			267279-8	FLAT WASHER 21	1	PC.
139			324355-2	TOOL HOLDER	1	PC.
140			216013-3	STEEL BALL 6	2	PC.
141			231669-1	TORSION SPRING 31	1	PC.
142			345334-7	CHANGE RING	1	PC.
143			418218-3	CHANGE COVER	1	PC.
144			216018-3	STEEL BALL 5.0	1	PC.
145			345335-5	LEAF SPRING	1	PC.
146			267270-6	FLAT WASHER 24	1	PC.
147			233924-7	RING SPRING 21	1	PC.
148			892373-3	CLEAR LABEL	1	PC.
149			123197-9	TOOL HOLDER GUIDE ASSY (Added)	1	PC.
		INC.		Item No. 22-31	1	PC.
D01			654228-8	RECEPTACLE	2	PC.
D02			654593-5	SPLICE	6	PC.

### **ACCESSORIES**

**- See catalogue or visit [www.makita.ca](http://www.makita.ca) for more optional accessories -**

A01			324219-0	DEPTH GAUGE	1	PC.
A02			824789-4	PLASTIC CARRYING CASE	1	PC.
		INC.	324207-7	SHAFT	1	PC.
		INC.	417724-5	LATCH	2	PC.
		INC.	419216-0	HANDLE	1	PC.
A03			A-90582	MAKITA GREASE R NO.00 30CC (1OZ)	2	PC.
A04			194079-2	QUICK CHANGE DRILL CHUCK	1	PC.
		INC.	251425-3	- FLAT HEAD SCREW M6X22	1	PC.
		INC.	324353-6	CHUCK HOLDER	1	PC.
		INC.	418216-7	SPACER	1	PC.
A05			194080-7	QUICK CHANGE SDS-PLUS CHUCK	1	PC.
		INC.		Item No. 131-147	0	
A06			D-14093	CHUCK ADAPTER ASSY (SDS-PLUS)	1	PC.
		INC.	751106-4	CHUCK ADAPTER	1	PC.
		INC.	251425-3	- FLANGE HEAD SCREW M6X22	1	PC.

Item No	Type	Ref	Part No	Description	Qty	Unit
A07			122574-2	1/2" DRILL CHUCK ASS'Y(W/SDS-PLUS CHUCK ADAPTOR)	1	PC.
		INC.	192877-8	1/2" DRILL CHUCK	1	PC.
		INC.	751106-4	CHUCK ADAPTER	1	PC.
		INC.	251425-3	- FLAT HEAD SCREW M6X22	1	PC.
A08			191686-2	SAFETY GOGGLE	1	PC.
A09	1		192664-5	1/2" KEYLESS DRILL CHUCK	1	PC.
	2		194254-0	1/2" KEYLESS DRILL CHUCK SET	1	PC.
A11			194683-7	GREASE VESSEL SET, 100CC, PUMP TYPE, FOR BIT	1	PC.
A12			256806-6	ROD 10 F/CORE BIT	1	PC.
A13			421342-3	DUST CUP 5	1	PC.
A14			421664-1	DUST CUP 9	1	PC.
A17			192877-8	1/2" DRILL CHUCK	1	PC.
A18			763432-9	CHUCK KEY S13(LONG HANDLE)	1	PC.
A19			765009-6	BLOW-OUT BULB 64	1	PC.
A20	1		192278-0	HOSE COMPLETE 28-1.5M, UNI	1	PC.
	2		A-34235	HOSE COMPLETE 28-1.5M SET W/FRONT CUFFS 22, 38	1	PC.
A21			P-80024	JOINT 25 (F/DUST COLLECTOR)	1	PC.
A22			256815-5	ROD 15	1	PC.
A23			195206-4	HAMMER SERVICE KIT	1	PC.
	2	INC.	A-90582	MAKITA GREASE R NO.00 30CC (1OZ)	2	PC.
		INC.	194074-2	CARBON BRUSH CB-325 2PC/SET (Use 195001-2 for Replacement)	1	SET
		INC.	286263-4	CAP 35	1	PC.
		INC.	216022-2	STEEL BALL 7.0	1	PC.
		INC.	421955-0	CUSHION RING 13	1	PC.
		INC.	213073-6	O RING 9	1	PC.
		INC.	233917-4	RING SPRING 28	1	PC.
		INC.	213227-5	O RING 16	1	PC.
A24			343411-9	CUTTER (Component of A25)	1	PC.
A25			A-43022	SCRAPER ASSY (See Parts breakdwon #122431-4, A-43022)	1	PC.
		INC.		Item No. A24		
A26			122823-7	1/2" KEYLESS DRILL CHUCK ATTACHMENT	1	PC.
		INC.	192892-2	1/2" KEYLESS DRILL CHUCK	1	PC.
A27			182749-5	OIL VESSEL (EMPTY) FOR 30cc (1oz)	1	PC.
A28			181118-7	ROTARY HAMMER OIL 100cc	1	PC.
A29			194582-3	GRIP BASE SET	1	PC.
		INC.	122809-1	SPACER 20 ASSY	1	PC.
		INC.	419975-6	GRIP BASE 20	1	PC.
		INC.	921919-9	HEX BOLT M8X10	1	PC.
A30			194580-7	DUSTCUP SET	1	PC.

**SERVICE CHANGES**

**1. Changes on Oil seal 12**

(TI#A7977)

Item No	Description	Type 1	Type 2
075	Oil Seal 12	213133-4	213678-2

